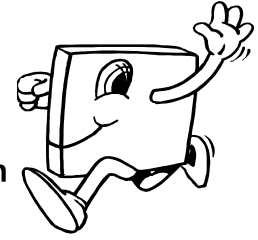


Decimals Thousandths - Number Squeeze




Use the software to randomly select decimals by using the onscreen dice.

“Number Squeeze” - a game for 2 or more people.

Aim: To fill the grid with numbers and achieve the highest total.

You will need: “Number Squeeze” sheet for each player (Thousandths Worksheet 16), a calculator.

1 Each Player in turn: Click on the  in the Thousandths place. Put the random number produced in any of the 6 boxes in **Grid A** on your sheet. *Hint:* Be careful where you place the number. A high number should go in any of the ‘high’ boxes, a low number should go in any of the ‘low’ boxes.

2 Rep
column m
below it.
because
written in
change it

3 Total
boxes us

4 Mov
now plac

5 Win
with the highest score wins.



This is a

PREVIEW

Subscribe today for a whole
year's access to ALL our
worksheets and videos!



Already a subscriber? Log in to download the full version of this worksheet.

n a single
er directly
in a box
A dash is
u cannot
ers in the
you must
r Grid B.
ne player

Variations

- Preset the number of grids to be used in the game before you start.
- Play with the whole class. One child operates the computer and calls out the numbers for the whole class.
- The children are paired and compete against their partner.
- The children play several grids. The top scorer in the class wins.

Game - "Number Squeeze"

THOUSANDTHS 17

Player 1

Player 2

| | | | | |
|---------------|--|--------|--|--|
| Grid A | | Total: | | |
| High | | | | |
| Low | | | | |

| | | | | |
|---------------|--|--------|--|--|
| Grid A | | Total: | | |
| High | | | | |
| Low | | | | |

| | | | | |
|---------------|--|--------|--|--|
| Grid B | | Total: | | |
| | | | | |

| | | | | |
|---------------|--|--------|--|--|
| Grid B | | Total: | | |
| | | | | |



This is a

PREVIEW

Subscribe today for a whole year's access to ALL our worksheets and videos!



Already a subscriber? Log in to download the full version of this worksheet.

| | | | | |
|-----|--|--|--|--|
| Low | | | | |
|-----|--|--|--|--|

| | | | | |
|-----|--|--|--|--|
| Low | | | | |
|-----|--|--|--|--|

| | | | | |
|---------------|--|--------|--|--|
| Grid D | | Total: | | |
| High | | | | |
| Medium High | | | | |
| Medium | | | | |
| Medium Low | | | | |
| Low | | | | |

| | | | | |
|---------------|--|--------|--|--|
| Grid D | | Total: | | |
| High | | | | |
| Medium High | | | | |
| Medium | | | | |
| Medium Low | | | | |
| Low | | | | |