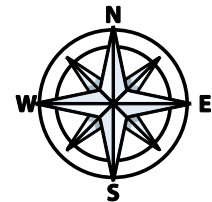


Thirty days have September
 All the rest have 31, Except
 It has 28 each year, but 29



Thirty days have September, April, June, and November.
 All the rest have 31, Except for February all alone,
 It has 28 each year, but 29 each leap year.

Area

Volume



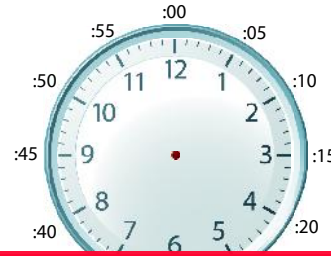
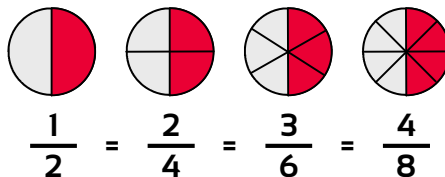
This is a
PREVIEW

Subscribe today for a whole
 year's access to ALL our
 worksheets and videos!

Already a subscriber? Log in to download the full version of this worksheet.

square millimetre (mm²)
 square centimetre (cm²)
 square metre (m²)
 square kilometre (km²)

cubic millimetre (mm³)
 cubic centimetre (cm³)
 cubic metre (m³)
 cubic kilometre (km³)



X	1	2	3	4	5	6	7	8	9	10
1	1	2	3	4	5	6	7	8	9	10
2	2	4	6	8	10	12	14	16	18	20
3	3	6	9	12	15	18	21	24	27	30
4	4	8	12	16	20	24	28	32	36	40
5	5	10	15	20	25	30	35	40	45	50
6	6	12	18	24	30	36	42	48	54	60
7	7	14	21	28	35	42	49	56	63	70
8	8	16	24	32	40	48	56	64	72	80
9	9	18	27	36	45	54	63	72	81	90
10	10	20	30	40	50	60	70	80	90	100

6	7	8	9	10
6	7	8	9	10
12	14	16	18	20
18	21	24	27	30
24	28	32	36	40
30	35	40	45	50
36	42	48	54	60
42	49	56	63	70
48	56	64	72	80
54	63	72	81	90
60	70	80	90	100

